

Stucco Color Card

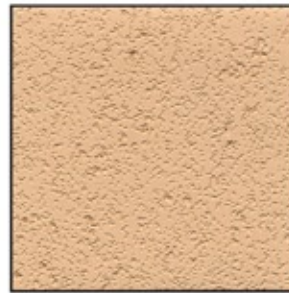
SOLOMON COLORS



BLUSH PINK S-612



PLATINUM GRAY S-610



DESERT TAN S-611



COLONIAL CREAM S-602



BAMBOO S-605



ADOBE S-615



CHAMOIS S-617



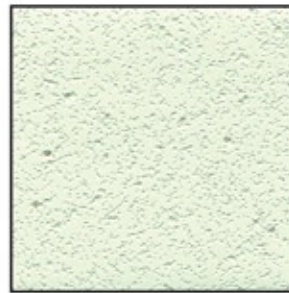
OLD IVORY S-603



SANDLEWOOD S-606



PARCHMENT S-621



MELLOW MINT S-609



SANDSTONE S-619



LEMON BUFF S-604



ANTIQUE WHITE S-601



MARINE BLUE S-622



DOVE GRAY S-623

The Solomon Stucco Colors were produced using a white stucco base.

These colors show an approximation of color obtained with a float finish. Application by machine spray or heavy texturing increases color depth. Variations of color due to job conditions and application can be expected.

Stucco Color Card





Stucco Colors

BASIC USE:

Solomon Colors Iron Oxide pigments are specifically designed to be used in cementitious materials to produce various colored concrete products. Coloring of concrete products dramatically changes their aesthetic value from a dull gray to a pleasing environmentally acceptable product. The proper selection and use of our colors can add new and lasting dimension to your project.

COMPOSITION AND MATERIALS:

Solomon Colors Natural and Synthetic Iron Oxides are available in a broad range of colors and blends. The three basic color groups, yellow, red, and black, are each produced by select manufacturing methods. With the yellow, red, or black combinations, Solomon Colors has expanded the color range by formulating laboratory controlled high tinting strength blends for accurate color control. Each of these colors is 99% minus 325-mesh particle size for easy dispersing and maximum coloring power. Solomon Colors iron oxides are permanent, inert, stable to atmospheric conditions, sunfast, limeproof, and free of deleterious fillers and extenders. All Solomon Colors pigments comply with ASTM 979 for integrally colored concrete.

PACKAGING:

Solomon Colors iron oxides for stucco are packaged in pre-weighed one pound unit bags. The colors on the chart are obtained by following the dosage rates indicated in the chart below. Preparation of a test panel is advisable before the start of each job.

ADMIXTURES:

Solomon Colors' Stucco Colors contain no admixtures such as calcium chloride, water reducing agents, or air entrainments. The use of these admixtures can produce changes in the uniformity of non-colored gray cement; subsequently their use with Solomon's Stucco Colors must be controlled carefully. When admixtures are a part of the job's mix design, their use must be employed equally throughout the job to ensure consistent colors.

INTEGRAL COLORING FOR STUCCO:

CAUTION: Most stucco premixes also contain sand. Color loading must be calculated on the lime and/or cement content only. Refer to the stucco mix chart for proper dosage. Use the same raw materials (same supplier) throughout the entire job to ensure color consistency.

AVAILABILITY:

Solomon Colors' Stucco Colors are readily available from stocks carried by an extensive network of building material dealers throughout the United States and Canada.

LIMIT OF WARRANTY AND LIABILITY:

Solomon Colors, Inc. warrants that their product conforms to the description and standards as stated on the product packaging and specific product literature. If properly mixed and applied, Solomon Colors, Inc. warrants the color to be uniform, limeproof, and sunfast. The exclusive remedy of the user or buyer and the limit of the liability of this company shall be the purchase price paid by the user or buyer for the quantity of the Solomon Colors products involved.

TECHNICAL SERVICES:

Color Development and Matching Services are available through Solomon Colors Color Service Laboratory to provide expert color assistance for your color needs. Please contact the Solomon Colors' Color Laboratory to indicate the mix design along with a sample or representation of the desired color that is to be produced.

AMOUNT OF CEMENTITIOUS MATERIAL	Number of Color Units*	Weight of Dry Sand
PREMIXED STUCCO PRODUCTS One 90-100 lb bag Stucco Mix	1 color unit	NA
White Portland One 94 lb bag white portland	2 color units	200 lbs
Two 94 lb bags white portland	4 color units	400 lbs
One 94 lb bag white portland One 50 lb bag hydrated lime	4 color units	300 lbs
One 94 lb bag white portland Two 50 lb bags hydrated lime	6 color units	400 lbs

* NOTE: One "unit" equals one pre-weighed bag of color.



- For information on placing and finishing decorative concrete, ask for "Solomon Colors Guide to Decorative Concrete Products."
- CSI 3-Part Tech Spec Sheets Available at www.solomoncolors.com & www.sweets.com



BST100 02/05