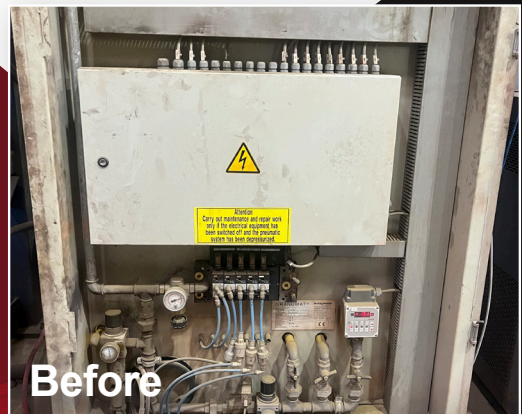


# ***COLOR SELECT GT-1 GRANULAR DISPENSER***

Cost Effective Control Unit Upgrades  
For Existing Granumat™ Systems

Seamlessly  
modernize your  
system with  
enhanced control  
and superior  
efficiency.



Before



After



# Intuitive & User-Friendly

## Upgrade Features:

- Replaces weight chamber controls and updates pneumatics.
- Replaces cyclone controls and pneumatics
- State of the art 19" Siemens IPC color machine interface that is intuitive and easy to use.

The screenshots illustrate the HMI interface for the ColorSelect GT1 Granular Dispenser. The top-left screen shows a main menu with five color selection buttons (Yellow, Light Red, Dark Red, Black, Yellow) and a central conveyor diagram. The top-right screen displays a 'Batch Information' table with columns for Recipe, Color, Step, Target, Actual, Deviation, Cyclone, Station, and Quality. The middle-left screen shows a 'Reporting' screen with 'Cyclone 1 - Mixer 1 Usage Totals' and 'Usage Totals by Shift 1' tables. The bottom-left screen shows a 'Report By Cyclone' section with checkboxes for Mixer 1 and Mixer 2. The bottom-right screen shows a 'Valve Calibration' screen with four calibration gauges: Coarse Calibration (2.507), Fine Calibration (0.000), Speed Calibration (1.100), and Pulse Calibration (0.000).

## Advanced Reporting:

- The Solomon Colors GT-1 features advanced data gathering capabilities, allowing it to filter and report on batch information.

Pictured Above

1. Intuitive HMI Interface
2. Batch Info Screen, with easy sorting filters, such as Color, Recipe, etc.
3. Reporting Screen for calculating usage totals by date and by mixer
4. Valve Calibration Screen, takes the guess work out of setting up valve flow controls, cams, and pulse times

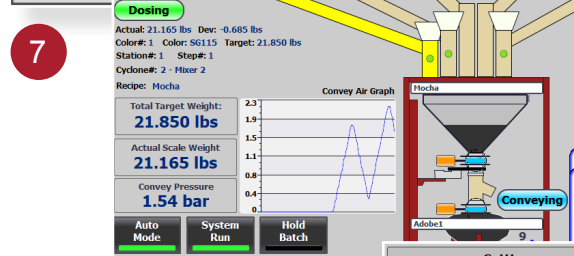
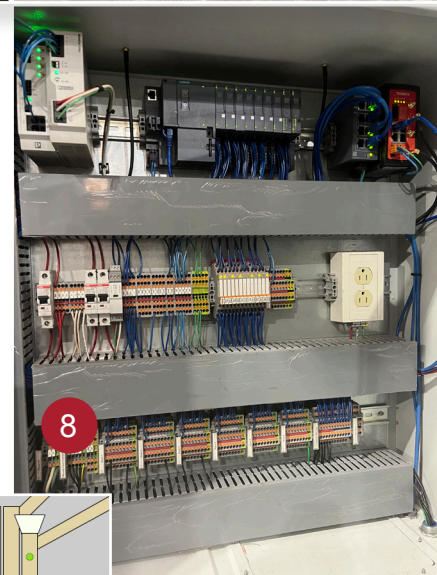
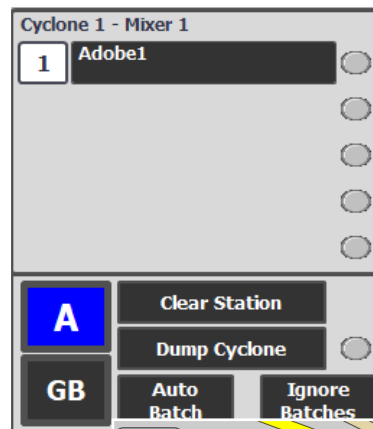
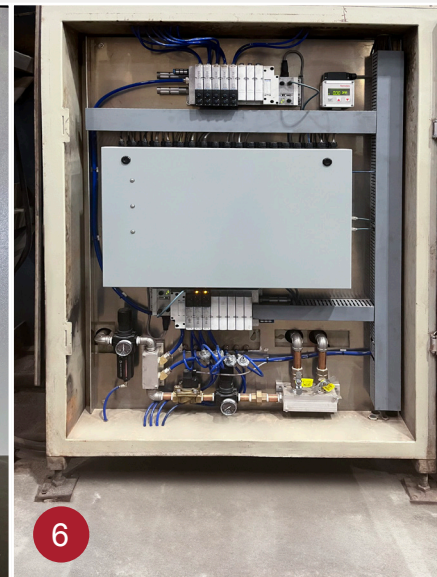
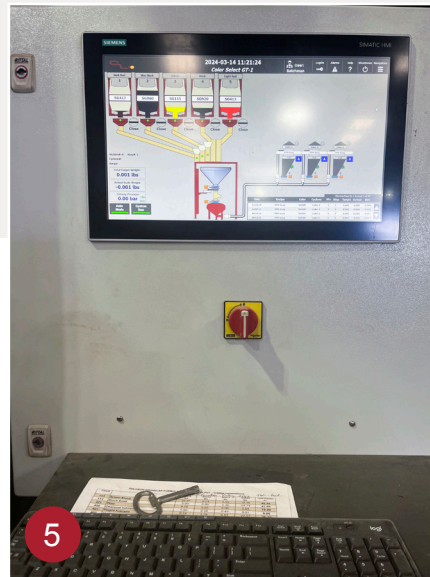


# Made in USA with 24/7 Tech Support

Engineered and manufactured in the USA, our system is built to last with parts fully stocked and ready for quick service. Enjoy 24/7 tech support to keep your operations running without interruption.

## System Advantages:

- GT-1 Control Software handles all scale calibration and control, eliminating the need for extra programs or cables.
- Recipes adjust to color position changes; there's no need to change recipes when altering color positions.
- Cyclone Batch Control Faceplate Streamlines the control process with the following features:
  - Control of each mixer station
  - Direct recipe step selection
  - Force automatic batch or dump sequence
  - Gray block mode
  - Ignore batches
- Remote I/O and Profinet architecture enable quick system modifications, with minimal additional wiring.
- Integrated cellular modem provides fast tech support without interrupting customer's IT network.
- System configuration changes are backed up in a SQL database.
- Advanced diagnostics for easy and quick troubleshooting of all system devices.



Setting	Set Point
Coarse To Fine Switch	2.000 lbs <a href="#">i</a>
Fine To Pulse Switch	0.800 lbs <a href="#">i</a>
Pulse Active Time	1.55 sec <a href="#">i</a>
Pulse Pause Time	1.00 sec <a href="#">i</a>
Inflight Correction	0.020 lbs <a href="#">i</a>
Color Name	SG115
Color Description	Yellow
Calibration	Calibrate

### Pictured Right

5. Color System Control Panel with 19" IPC
6. Weight Chamber Back Panel, complete with advanced ethernet based remote I/O and pneumatics
7. Cyclone Batch Control Face Plate
8. Inside of Color System Control Panel with high performance Siemens PLC
9. HMI interface displays dosing and conveying information with intuitive phrasing and animation
10. Similar nomenclature to Granumat™ shorting the learning curve for operation.

**Scan Code to Learn More!**



10



**800-483-9628 • [solomoncolors.com](http://solomoncolors.com)**

Solomon Colors, Inc.  
4050 Color Plant Road,  
Springfield, IL 62702  
An Employee-Owned Company

