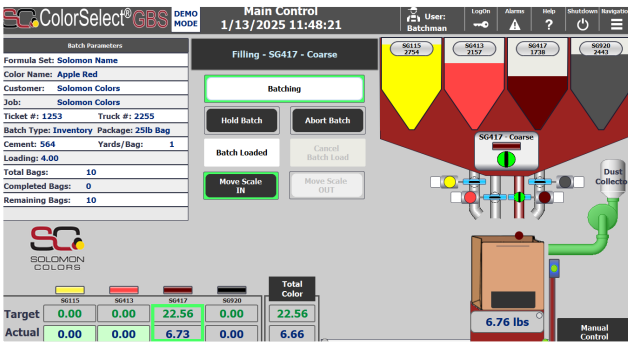


GBS-2.0

Thousands of colors can be created in ColorFlo® Granular pigment from only four primary colors, all while drastically reducing color inventory.

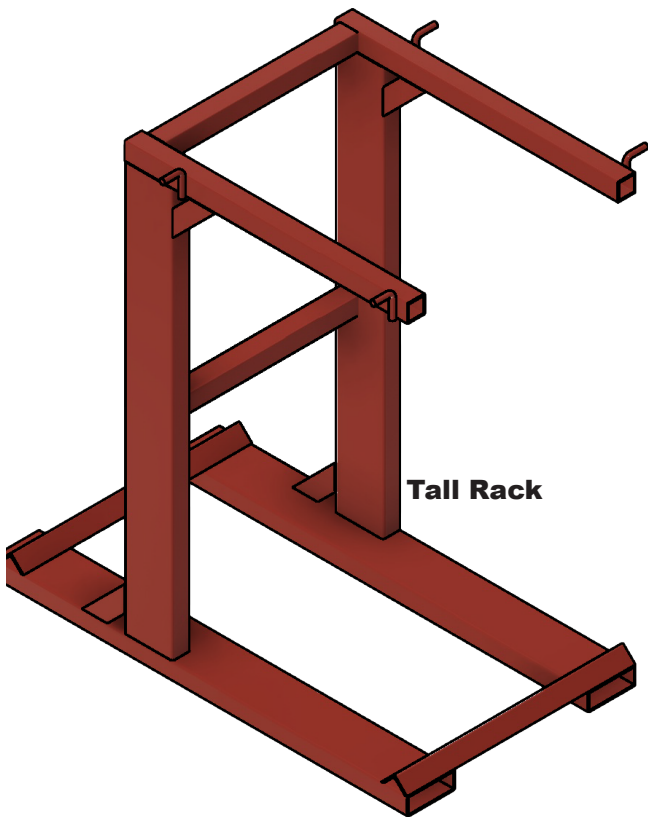


SYSTEM

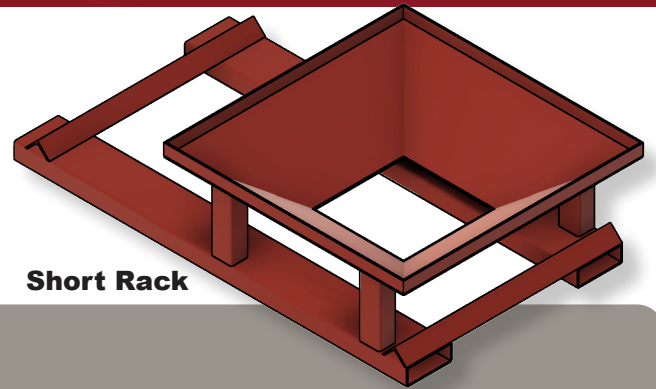
- Designed for Ready-Mix suppliers and Distributors of ColorFlo® Granular pigment
- User-friendly 15" PC touch screen interface with advanced graphics and reporting
- **Front-Side Color Loading** with small footprint
- Ergonomic finished bag take-off height
- Simple efficient design
- Clean color with minimal dusting
- Batches pigment into either re-pulpable bags or buckets
- System prints a batch ticket after each batch is produced
- Built-in cellular remote access for real-time technical support and software update
- Multi-position dosing valves for highly accurate batch weights
- Dual Rack Options: Bag unload racks for high or low ceiling heights



GBS - 2.0 **Granular Bagging** **System**



Tall Rack



Short Rack

**SCAN CODE
TO LEARN MORE:**



SPECIFICATIONS

- 2,400-2,700lb Super Sacks
- Dispenses up to 75lbs per minute
- System accuracy of +/- 0.05 lb.
- 15lb and 25lb repulpable bags or 5-gallon buckets

FOOTPRINT

- Width: 9'
- Depth: 7'
- Height: 8'
Short Rack - 15'
Tall Rack - 16 1/2'

REQUIREMENTS

- Electricity: 110 V, 15 Amp
- Clean, Dry Air: 5 CFM at 80 PSI
- Water: None

For a complete overview of the Color System along with Site Requirements, please contact your local Solomon Colors Representative.

