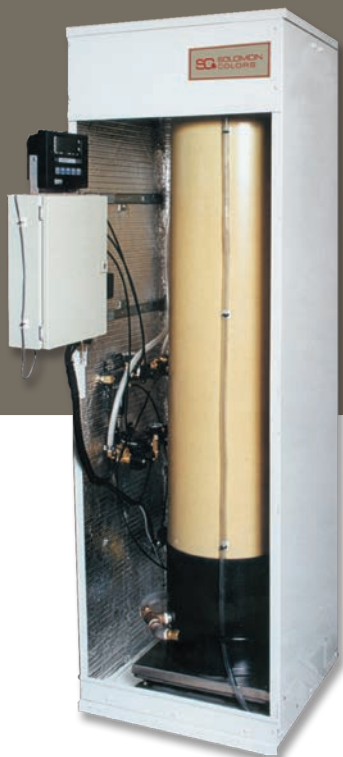


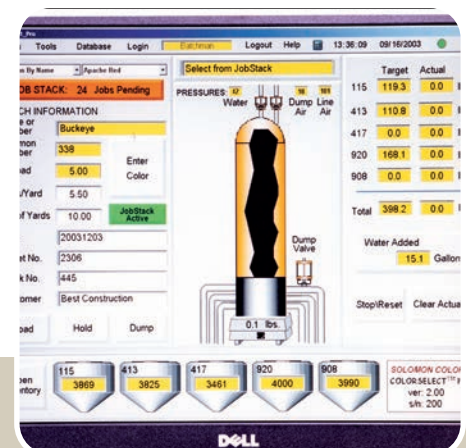
ColorSelect[®] Liquid Ready Mix System

The Solomon ColorSelect[®] System is a fully integrated, automated system designed specifically for use in Ready Mix Plants.



SYSTEM

- Windows-based PC control system & software
- User-friendly, operationally efficient, and flexible
- Designed for volume concrete producers using ColorFlo[®] Liquid pigment as an added value product
- Freestanding and containerized versions available
- 47 gallon weigh vessel mounted on a platform scale. The vessel is equipped with an automatic wash-out feature
- Easily store and retrieve information from the database for every batch of color produced
- Remote Service Technicians available 24/7



ColorSelect® Liquid Ready Mix System

EFFICIENT OPERATION

- Track color production with an innovative database function which allows for customized reports and recalling individual tickets for an entire year of production.
- Operators can select job information from a "Job Stack," eliminating errors from re-entering the information. Jobs in the stack can be entered in advance of when they will be run, freeing up the operator's time. The jobs can also be entered from a central dispatch or remote location.



COLORSELECT® OPTIONAL EQUIPMENT

- Protect your color system from the elements with the ColorSelect® Containerized System
- Get all of the benefits of the standard ColorSelect® Liquid System in a conveniently packaged setup.
- All of the totes, controls, pumps, weigh chamber, and add-ons are securely housed inside a lockable and insulated container.

SPECIFICATIONS

- Manual or automatic fill and dump cycles
- 4 (or 5) APEX hose pumps
- 4 (or 5) conical-bottom stationary supply totes
- 400-gal. capacity each
- Remote PC-based interface with emergency stop
- Air wand recycle system
- 884lb Batch Capacity

FOOTPRINT

- Main panel: 8" x 24" x 36"
- 47-gal weigh chamber: 27" x 26" x 83"

REQUIREMENTS

- Electrical: Main power — 230 V or 460 V,
3-phase Control circuits — 110 V
Communication — Ethernet
- Plumbing: Pump suction — 1.5" suction hose
Pump discharge — 3/4" nylon tube
Delivery — 1" rubber hose
- Air: 80-100 PSI, 40-50 CFM, 3/8" FPT
- Water: 40 PSI continuous pressure, 3/4" FPT

ColorSelect® Containerized Liquid System



For a complete overview of the Color System along with Site Requirements, please contact your local Solomon Colors Representative.

062422MOD

SC SOLOMON
COLORS

solomoncolors.com | (800) 624-0261